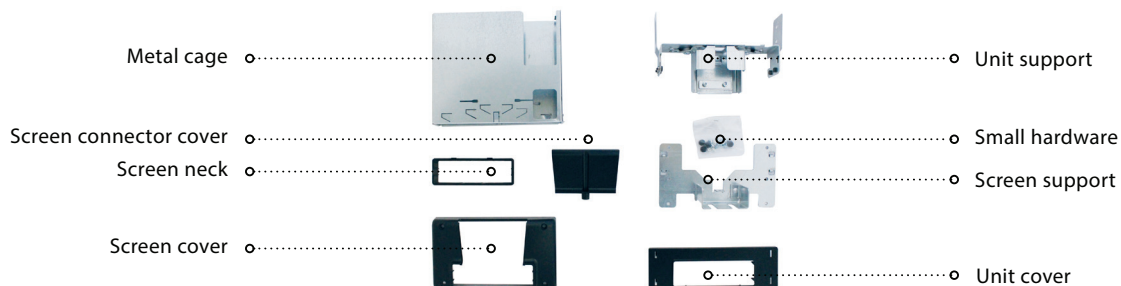




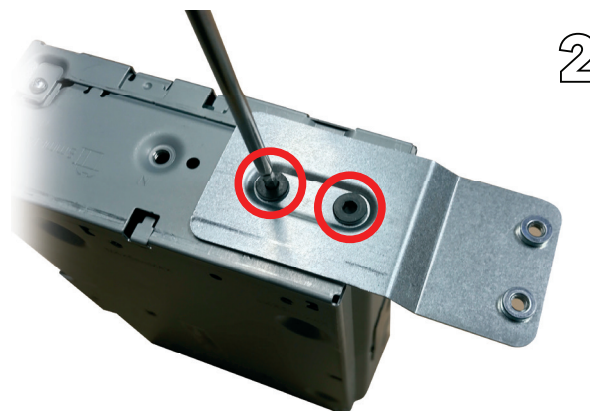
CA-HM-UNI-EVO.009

INSTALLATION KIT FOR SPH-EVO62DAB & SPH-EVO64DAB

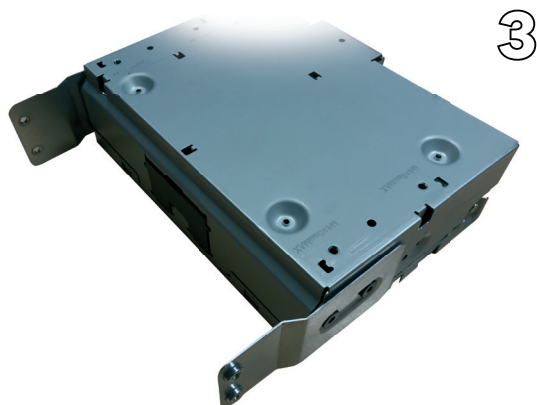
EN - Installation Manual



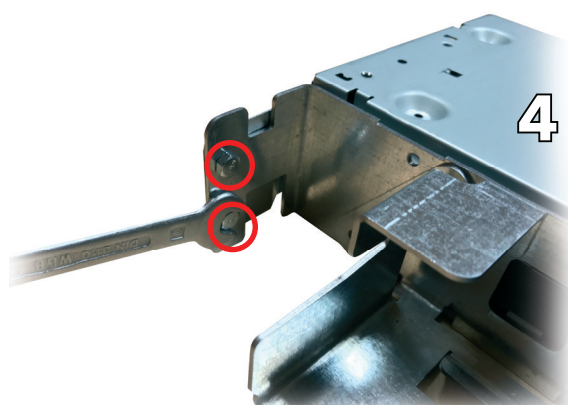
Open locking mechanism



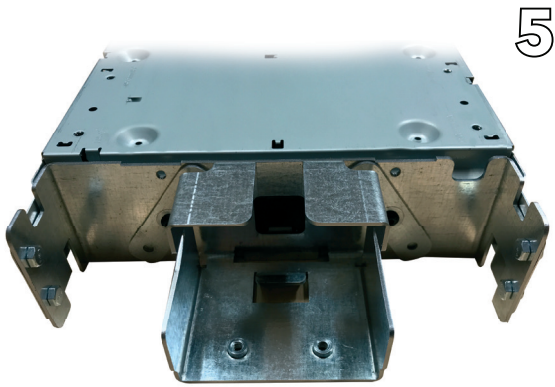
Mount side support bracket with the hardware supplied (included with the installation kit)



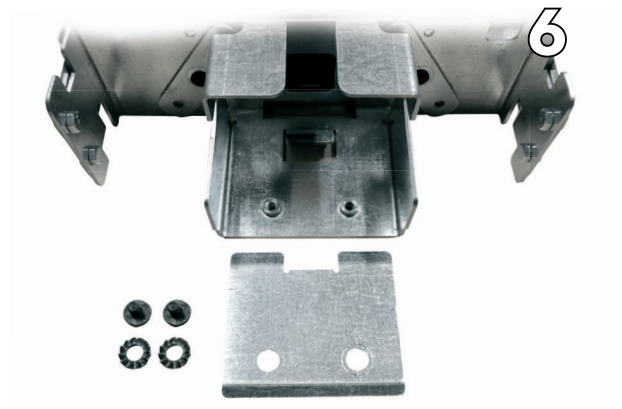
Left & right support brackets installed



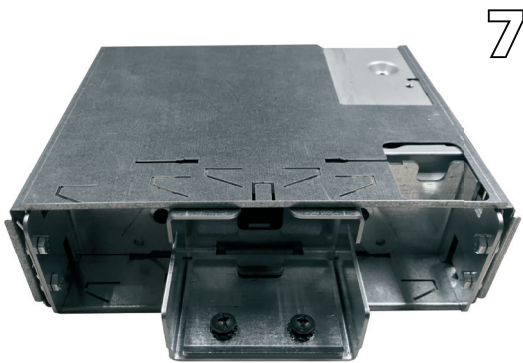
Mount unit support to the side brackets using the supplied hexagonal bolts (included with the installation kit)



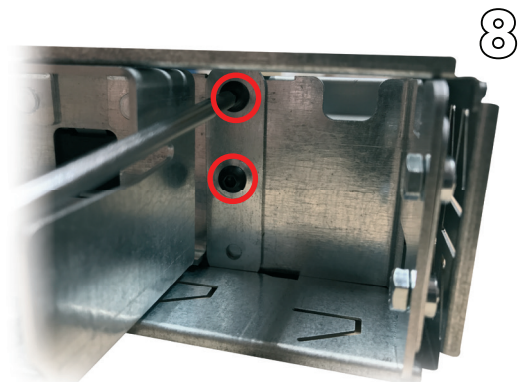
**Completed installation of unit
with unit support**



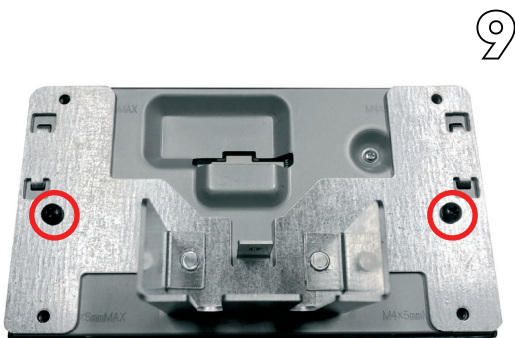
**Install sliding mecha using the shown hardware
(included with the installation kit)**



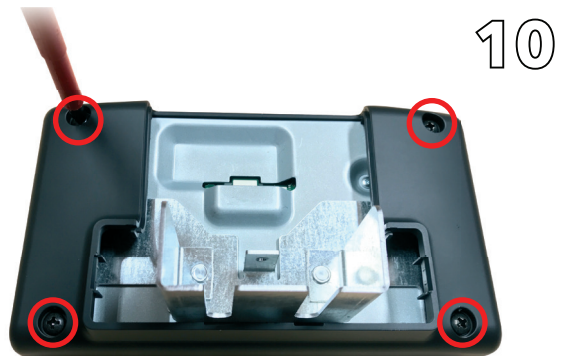
Slide the complete mechanism into the metal cage



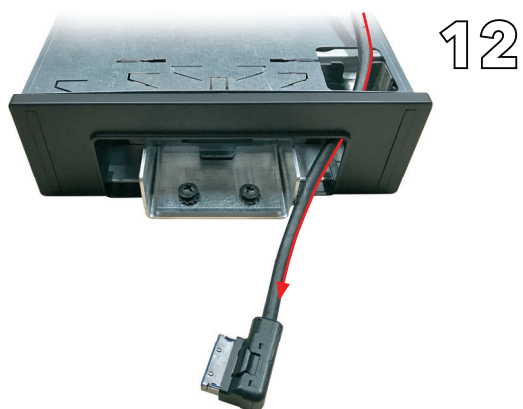
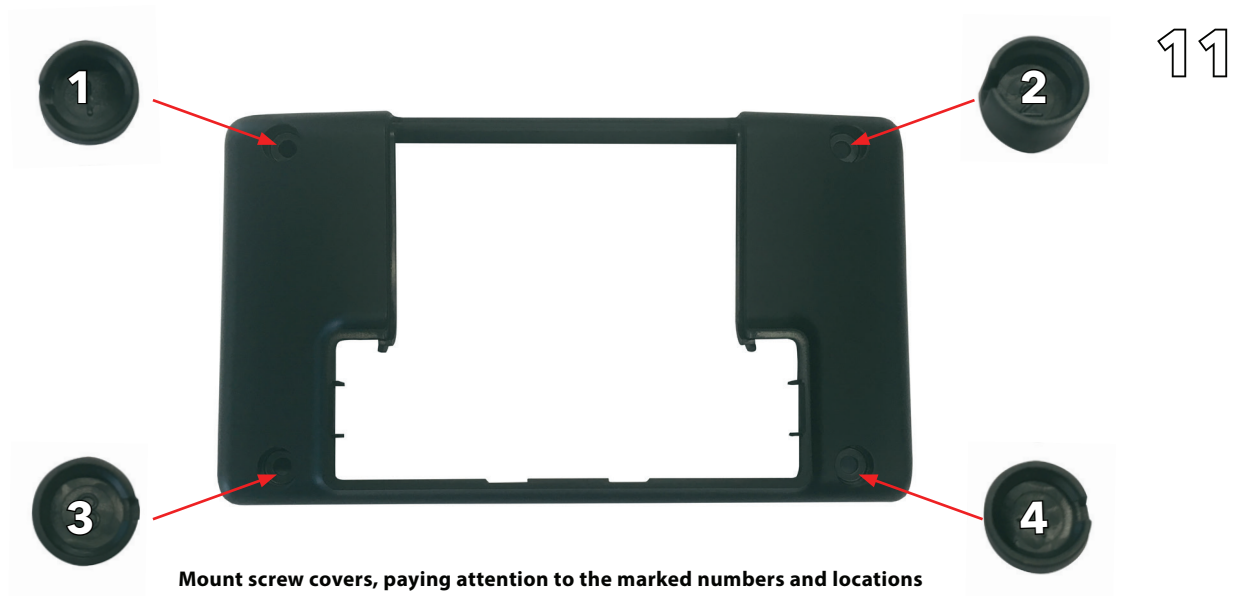
**Lock the unit support into the metal cage by opening the two
metal tabs and tighten the indicated screws (on both sides)**



**Mount screen support to the screen using
the two center screws on each side
(included with SPH-EVO62DAB & SPH-EVO64DAB)**



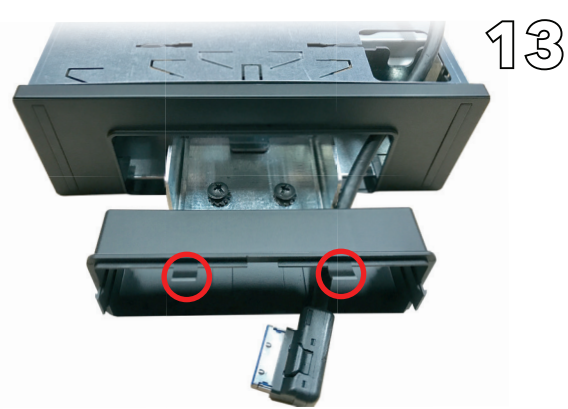
**Mount screen cover onto the screen support
using the remaining four screws as indicated
(included with SPH-EVO62DAB & SPH-EVO64DAB)**



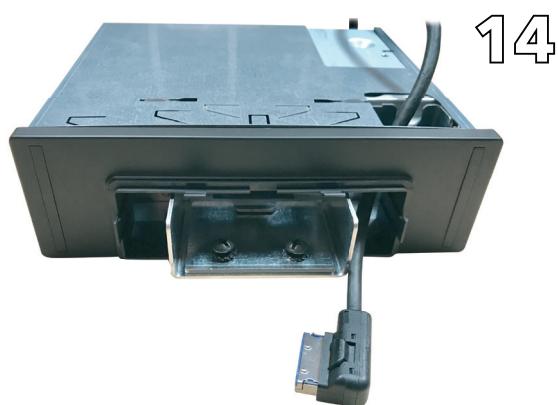
Pull screen cable over the unit into the opening and install the unit cover



For SPH-EVO64DAB you need to use the center opening installed to the top. For SPH-EVO62DAB you can use to preference



Slide the screen neck into the unit cover, pay attention to the positioning of the tabs



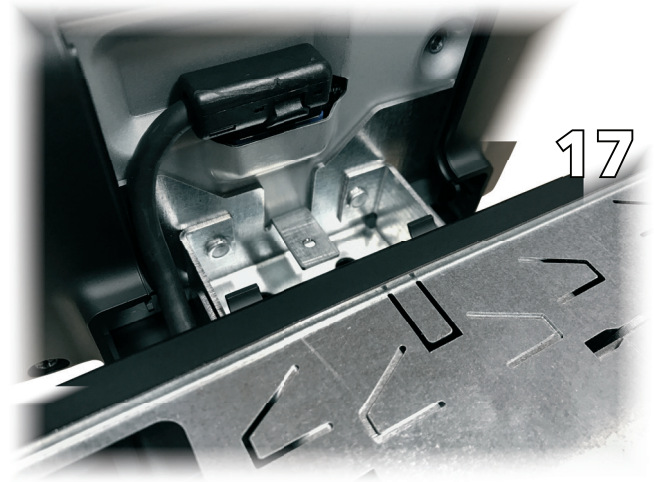
Completely inserted screen neck



Slide the screen support into the unit support



Choose the desired distance for your screen and tighten the two screws on top (included with the installation kit)



Insert the connector into the screen



Pull the screen neck towards the screen holder until it 'clicks' into place



Slide the connector cover in the back of the screen and fix the screw (included with SPH-EVO62DAB & SPH-EVO64DAB)



Final product image